

West Cumbria MRWS Partnership

[Managing Radioactive Waste Safely]



westcumbriamrws.org.uk

westcumbria:mrws

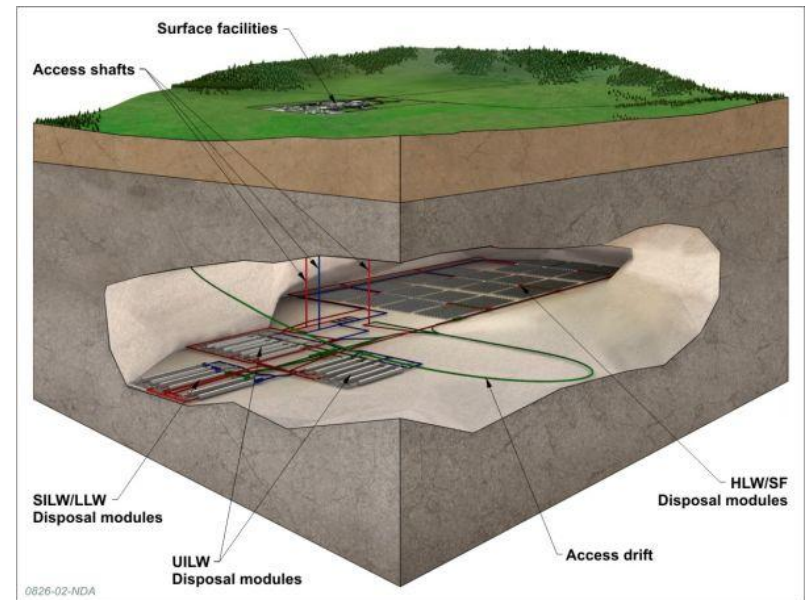
MRWS ?

- Government search for final home for higher level radioactive wastes
- Communities invited to talk without commitment about a geological disposal facility
- Voluntarism: can withdraw



Geological disposal?

- It involves putting the waste in an engineered underground facility deep inside a suitable rock formation
- Recommended by CORWM and is also preferred internationally

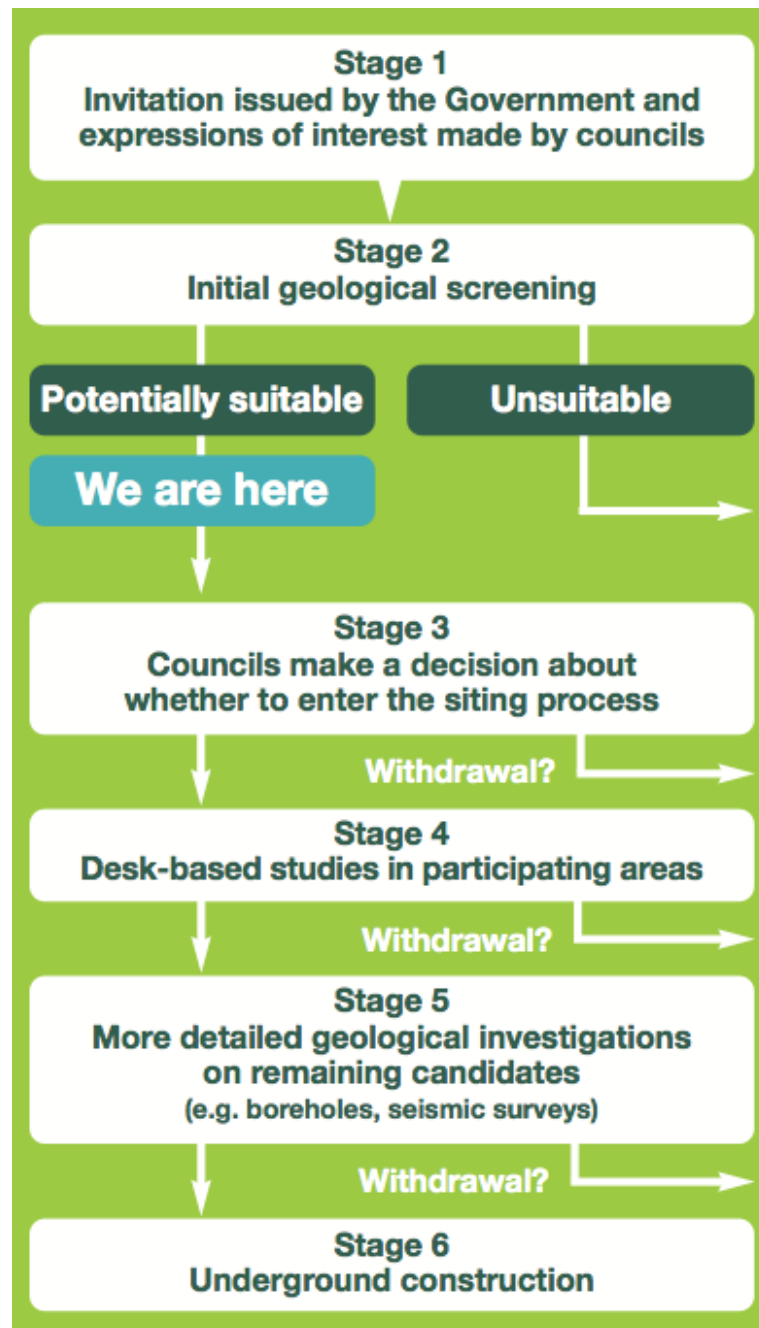


West Cumbria MRWS Partnership

Aim: To inform councils' decision about whether or not to participate in the Government's siting process, without commitment to eventually host a facility



westcumbria:mrws



Topics

7 - Inventory

8 - Geology

9 - Design and Engineering

10 - Safety, security, environment and planning

11 - Impacts

12 - Community Benefits Package

13 - Stages 4 and 5

14 - Public and Stakeholder views

6 - Over-arching Issues: Trust

7 - Inventory

Affects

Uncertainty

Principles



Opinion: Unable to say at this stage we are satisfied with the proposed inventory because we do not have definite information on what actually would go into a repository (operation is ~25 years away).

Advice in possible Stage 4: Agree a process for inventory change control with Government, including circumstances under which the councils should have a veto.

8 - Geology

Multi-barrier approach

Screening study

Suitability is contentious



**British
Geological Survey**

NATURAL ENVIRONMENT RESEARCH COUNCIL



Opinion: Partnership agrees that it is inherently uncertain whether a suitable site can be found; that more geological work is required; it should be done ASAP. However, there is a difference of view on whether further work should be done before or after a Decision about Participation.

Advice in possible Stage 4: independently review the NDA's work, in particular on geological assessments.

9 – Design & Engineering

Generic designs



Opinion: Content that detailed design issues are largely site specific and, as such, cannot and should not be resolved at this time.

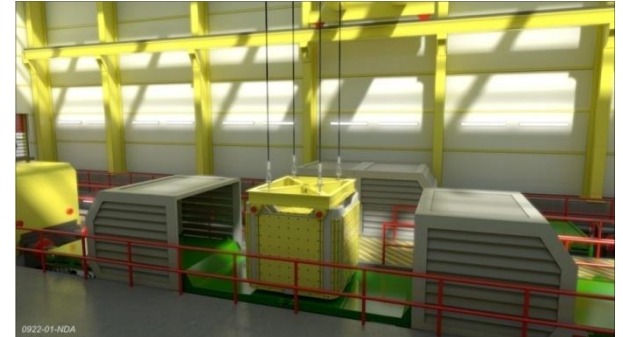
Specifically we understand the generic design concepts being worked on, and they fit with our expectations.

*We have confirmed that **retrievability** of waste is an option, to be decided upon in future.*

10 – Safety, Security, Environment and Planning

Highest priority

Opinion: *Confident in regulators and their processes at this stage.*



Areas within National Park are not considered for a surface facility.

NDA's R&D programme is acceptable but note concerns about lack of progress, and lack of clarity over timescales for completion.

Advice in possible Stage 4: *Secure Engagement Package funding to allow commissioning of independent reviews of any work done by NDA, including on safety.*

11 - Impacts

Scale

Impacts

Opinion: Fairly confident that acceptable process can be put in place to mitigate negative impacts and maximise positive impacts.

Advice in possible Stage 4: That a coordinated strategy and action plan be prepared to support the sectors of the economy most at risk if the process enters the site search (visitor, land-based and food and drink).

A full economic impact assessment be conducted as sites are identified.

12 – Community Benefit Package

White Paper

Principles: scale, additionality, distribution, timing, guaranteed

Opinion: *Certain amount of confidence that an acceptable package could be negotiated. However, cannot be certain this far in advance. A final decision to accept a repository should only be made if Government is bound to honour its commitments.*

Advice in possible Stage 4: *Use the 13 principles as the basis for negotiation.*

13 – Stages 4 and 5

Uncharted territory

Tasks for Stage 4 and 5

Opinion: Have some confidence that the siting process is sufficiently robust and flexible, at least during Stage 4.

Reassured by councils' ability to withdraw West Cumbria out.

First challenge in a possible Stage 4 is to agree how a Community Siting Partnership (CSP) should operate.

Advice in possible Stage 4: Establish and operate a CSP in line with our guidance (see full report). Need to work with host communities and wider local interests.



14 – Public and Stakeholder Views

3 rounds

Public Consultation

Opinion Survey



Opinion: Most members are satisfied that the Partnership's work reflects the public views received, but a couple of members feel this is not the case on some topics (where differences of view still exist)



westcumbriamrws.org.uk

westcumbria:mrws

6 – Over-arching Issues

Uncertainty. Many only possible to reduce in later stages.
Use the tasks provided to build the work programme of a CSP.

Trust. At the root of concerns. Asked for, and have received, commitment from Gov't that process will be made legally binding.
Progress this with Gov't early in work programme of a CSP.

SEA. Looks at 'reasonable alternatives' to disposal, other sites, other siting processes than voluntarism.

Difference of view about when this is best done: either before a DaP (so DMBs can have info to hand) or after DaP (when the assessment would be more site-specific and therefore useful).

Summary

- ✓ Over 3 years work, 17 organisations
- ✓ Formed opinions in 9 areas
- ✓ Offering advice to DMBs
- ✓ Partnership's work is now complete



END

www.westcumbriamrws.org.uk