

West Cumbria Managing Radioactive Waste Safely Partnership



Meeting Report

From 28th October 2010

At The Greenhill Hotel, Wigton

Document No:	119
Status:	Adopted
Title:	Meeting Report from West Cumbria MRWS Partnership on 28 October 2010
Author:	3KQ (see note overleaf)
Notes:	None

Note:

This report is a summary of discussions at the meeting. It is compiled by independent facilitators 3KQ, operating on behalf of all participants. Note that it is meant as an aide-memoire for participants and a means of update to non-attendees, rather than a definitive record of every detail.

Facilitators/Authors: Richard Harris, Rhuari Bennett, Jane Dalton

Contacts:

richard@3kq.co.uk

rhuari@3kq.co.uk

jane@3kq.co.uk

Telephone 01539 739 435

3KQ Ltd
93 Serpentine Road
Kendal
Cumbria
LA9 4PD

3KQ Ltd
Pantiles Chambers
85 High Street
Tunbridge Wells
Kent TN1 1XP

3KQ Ltd is a company that helps organisations engage the public and stakeholders around contentious issues within the environmental sector. For more information see www.3kq.co.uk.

Front cover image supplied by the Nuclear Decommissioning Authority.

Executive Summary

Overview. The 12th meeting of the West Cumbria Managing Radioactive Waste Safely (MRWS) Partnership took place on 28th October 2010. 34 people attended with 18 members of the public present to observe the meeting. The main objectives of the meeting were to: assess the British Geological Survey (BGS) screening study report; initiate, monitor and guide the second round of Public and Stakeholder Engagement (PSE2); and agree the way forward regarding a quantitative indicator for credible support and decision making.

Updates. Fred Barker is liaising with the Nuclear Decommissioning Authority (NDA) to take account of its latest proposals in updating the Partnership's working draft on the potential siting process in Stage 4 of the MRWS process and beyond. Greenpeace has published a report on the scientific uncertainties associated with geological disposal. The European Commission has recently run a consultation exercise to inform its consideration of a possible new directive on the management of radioactive waste and spent fuel. The NDA's Radioactive Waste Management Directorate (RWMD) is planning a workshop in September 2011 on the '*current status of science and technology underpinning geological disposal of UK higher activity wastes*'. The NDA has clarified the amounts of waste held at Sellafield. The Cumbria Association of Local Councils' mandate to represent town and parish councils on the Partnership has been refreshed. The Community Benefits Sub-Group has commissioned research to look into international experience of community benefits in the past, and is developing a set of principles that the Partnership might want to consider adopting prior to the point of a decision about participation. The Impacts Sub-Group is in the process of seeking tenders for research into the potential impacts of hosting a geological disposal facility. The Steering Group is considering a programme of visits to international facilities in Scandinavia, the USA and France.

British Geological Survey Screening Study. The BGS screening study of the geology of West Cumbria was published at the meeting. The Partnership heard presentations from the Department of Energy and Climate Change who commissioned the report, the BGS and one of the peer reviewers. All reports are available to download at www.westcumbriamrws.org.uk. The Partnership discussed the findings of the report, and considered how to deal with questions and issues that will be raised by members of the public and stakeholders during PSE2.

Public and Stakeholder Engagement Round 2. The Partnership was reminded of plans for PSE2, including further information about the Community Drop-in Events, the Discussion Pack and the new website, together with the planned methods for raising awareness about the MRWS process and the work of the Partnership through newsletters, advertorials and articles in newspapers and local authority publications.

Credible Support. The Partnership revisited the use of a quantitative indicator to assess how 'credible support' might be defined. It was agreed that the use of net support as an indicator would be taken into PSE2 for people to consider and comment on, and that the outcomes of this consultation will be considered by the Partnership at a later stage alongside other issues raised.

For future meeting dates and more information please see the Partnership's website www.westcumbriamrws.org.uk.

1. Introduction

1.1 – Objectives

Specific objectives for the day were to:

- Assess the British Geological Survey (BGS) screening study report (Task 2b).
- Initiate, monitor and guide the second round of Public and Stakeholder Engagement (PSE2) (Task 6a(iv)).
- Agree the way forward regarding a quantitative indicator for credible support and decision making.

The full agenda is in Appendix 1.

1.2 – Attendance

34 participants¹ attended at The Greenhill Hotel near Wigton on 28th October 2010. A full list of those in attendance is in Appendix 2. The meeting was open for the public to observe and 18 members of the public attended.

2. Updates

2.1 – Siting process discussion paper

Fred Barker is liaising with the Nuclear Decommissioning Authority (NDA) to understand its latest proposals for the potential siting process in Stage 4 of the Managing Radioactive Waste Safely (MRWS) process and beyond. He will update the Partnership's discussion paper that the Partnership has adopted as a working draft and which will be published (as Document 75) after the next Steering Group meeting on the 10th of November. The changes will be checked by the Steering Group before being published as a draft for comment during PSE2. The whole Partnership will then review and revise the paper before reaching any conclusions next year.

2.2 – Documents published

Since the last Partnership meeting, the following documents have been published in the Documents section of the Partnership website

http://www.westcumbriamrws.org.uk/all_documents.asp:

- 98. Steering Group Minutes 18/08/2010
- 95. Community Benefits Sub-Group Report 18/08/2010
- 93. Meeting Report 05/08/2010
- 92. Briefing Note - Why Geological Disposal?
- 91. Briefing Note - Why the Siting Process is Different to Nirex
- 90. Briefing Note - Retrievability

2.3 – Greenpeace has published *'Rock Solid: A Scientific Review of Geological Disposal of High Level Radioactive Waste'*

This report from Greenpeace highlights scientific uncertainties involved with geological disposal. Many, if not all, of the uncertainties highlighted are also included in the Nuclear Waste Advisory Associates Issues Register (circulated previously and available at <http://www.nuclearwasteadvisory.co.uk/page.asp?id=3>).

¹ Plus 8 from the facilitation team, secretariat and presenters.

A high-level assessment of the issues raised is also built into the Partnership's Work Programme (Document 13.1 in the Documents section of the Partnership website http://www.westcumbriamrws.org.uk/all_documents.asp).

2.4 – European Commission possible new directive (update from the Department of Energy and Climate Change)

The European Commission has recently run a consultation exercise to inform its consideration of a possible new directive on the management of radioactive waste and spent fuel. It is expected that the proposed directive will take the same approach as the Nuclear Safety Directive (2009/71/Euratom), and set a community framework for the continued improvement of radioactive waste and spent fuel management. It is also expected that the scope of the proposed directive will be wide and will cover all radioactive waste, including naturally occurring radioactive materials from nuclear and non-nuclear sources. This draft directive has since been published at http://ec.europa.eu/energy/nuclear/waste_management/waste_management_en.htm.

The UK will seek to ensure that any Directive is compatible with current UK higher activity waste policy and, in particular, the commitment to implement geological disposal through a process based on voluntarism and partnership with local communities. The Department of Energy and Climate Change (DECC) will provide further information to the Partnership on developments in due course.

2.5 – Radioactive Waste Management Directorate workshop

The NDA's Radioactive Waste Management Directorate (RWMD) is planning a workshop in September 2011 on the '*current status of science and technology underpinning geological disposal of UK higher activity wastes*'. It is part of the scientific process, and in a field such as geological disposal the NDA consider that it is essential that they continually expose their programme to this process. The focus of the workshop will be very research and academia orientated, and will involve organisations such as the Royal Society of Chemistry, the Geological Society and the Nuclear Institute. They are therefore not expecting Partnership members to attend, although if anyone has a background, or interest, in scientific process they are more than welcome.

2.6 – NDA clarification of waste percentages at Sellafield, and Ministry of Defence wastes in the baseline inventory

At the previous Partnership meeting on the 5th of August (see meeting report – Document 93, Section 4.6) the Partnership requested clarification from the NDA regarding the percentages of wastes held at Sellafield. The percentages provided by the NDA below are based on figures reported in the 2007 UK Radioactive Waste Inventory (i.e. the latest published inventory information):

2.6.1 – Waste held at Sellafield (by packaged volume and activity)

To avoid ambiguity regarding what is meant by waste currently held at Sellafield, the percentage of waste is presented for (a) in stocks and (b) in stocks and predicted to arise in the future. Waste is defined here as the UK's higher activity waste (i.e. low-level waste (LLW) unsuitable for a low-level waste repository, intermediate-level waste (ILW) and high-level waste (HLW)), and does not take into account radioactive materials identified in the Baseline Inventory that could potentially be declared as waste in the future (i.e. spent fuel, separated stocks of plutonium and uranium).

a) Percentage in stocks

The percentage of the UK's higher activity waste in stocks as of 1st April 2007 at Sellafield is estimated to be approximately:

- 70% by packaged volume.
- 98% by activity.

b) Percentage in stocks and future arisings from existing facilities

If predicted future arisings, as well as existing stocks, are taken into account, the percentage of the UK's higher activity waste at Sellafield is estimated to be approximately:

- 50% by packaged volume.
- 94% by activity.

2.6.2 – Ministry of Defence waste and materials included in the inventory (by volume)

The Baseline Inventory includes wastes and materials that may potentially be declared as waste in the future. The Baseline Inventory includes Ministry of Defence (MoD) wastes in the form of LLW and ILW from operation, and decommissioning of nuclear submarines. The Upper Inventory also includes MoD material not currently declared as waste e.g. spent fuel from submarines.

To avoid ambiguity the percentage (by packaged volume) of MoD wastes and materials in the:

- Baseline Inventory is approximately 2%.
- Upper Inventory is approximately 2.5%.

The figures presented are based on information in the 2007 UK Radioactive Waste Inventory and RWMD's Derived Inventory.

The NDA confirmed that the information from 2007 is currently the latest published information. DECC confirmed that an update (which will have information as of April 2010) is likely to be published in 2011.

The NDA is close to publishing its response to the critique of the inventory by Pete Roche which was presented at the last Partnership meeting on 5th August. It was therefore agreed that if any further clarification is required following the publication of both the NDA and Pete Roche's reports (Documents 88 and 94, to be published shortly), the NDA will provide more detail at that stage.

Further information is included in the White Paper (including figures by volume – see <http://www.westcumbriamrws.org.uk/documents/White-Paper-final.pdf>), and in the presentations given by the NDA and Pete Roche at the meeting on August 5th (see meeting report – Document 93, Section 4).

There was a request to expand on the timelines of when the different wastes might arrive, and the NDA agreed to take this away to consider.

2.7 – Cumbria Association of Local Councils update

The Cumbria Association of Local Councils (CALC) reported that their mandate to represent town and parish councils on the Partnership has been refreshed.

2.8 – Community Benefits Sub-Group update

The Community Benefits Sub-Group has commissioned Galson Sciences to look into international experience, and the nature/scale of community benefit that there has been in the past. An outline of their paper was presented to the Steering Group at their last meeting on 13th October. The outputs will be presented at the next Partnership meeting on December 10th.

A memorandum of understanding is also being developed around a set of principles that the Partnership might want to consider adopting prior to the point of a decision about participation. These principles may include staged payments, distribution with regard to geographical area, and the broad scale of community benefits.

2.9 – Impacts Sub-Group update

The Impacts Sub-Group has signed off the specification for research into the potential impacts of hosting a geological disposal facility (GDF). There was a poor response to the initial tender, which was considered to be partly due to it having been put out over the summer period. The Sub-Group is therefore currently in the process of re-seeking tenders from relevant organisations.

2.10 – Programme of international visits

The Steering Group is looking at a programme of visits to international facilities in Scandinavia, the USA and France. They are liaising with the NDA and will be discussing this further at the next Steering Group meeting on the 10th of November.

3. British Geological Survey Report

3.1 – Background

The preliminary geological screening study of West Cumbria that was carried out by the BGS, was published by DECC at the meeting. There was a reminder that the BGS study was a requirement of the Government to check that the whole area is not unsuitable, and it identifies what areas of Copeland and Allerdale, and up to 5 kilometres offshore, are *clearly geologically unsuitable* for a GDF.

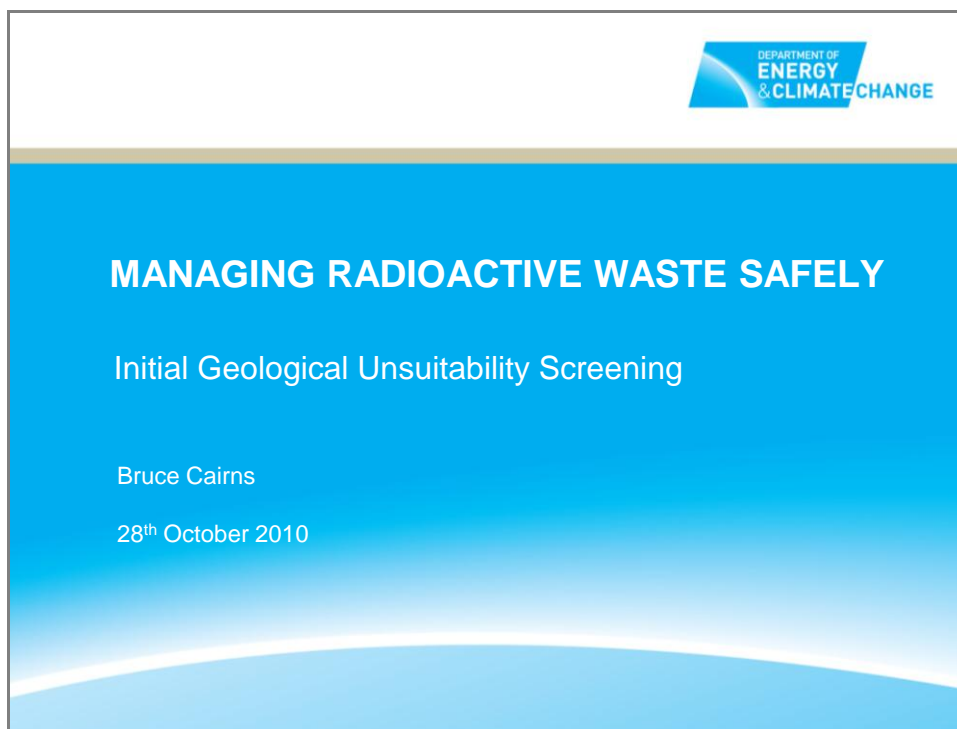
The full BGS report can be found in the Documents section of the Partnership website (Document 116 (in 3 sections)) or on the DECC website: http://mrws.decc.gov.uk/en/mrws/cms/Disposal/Site_selection/Initial_screen/west_cumbria/west_cumbria.aspx. A non-technical summary is also available on the Partnership website (Document 115).

3.2 – Series of presentations

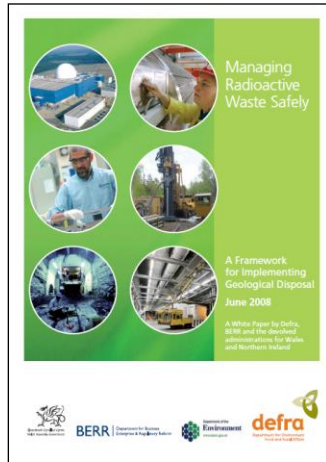
The Partnership heard a series of presentations from DECC, the BGS and one of the peer reviewers, prior to an opportunity for questions and discussions about the content and implications of the screening study.

The presentation slides are provided in 3.3 to 3.5 below.

3.3 – Presentation from Bruce Cairns of DECC



Purpose of the report



- Broad brush regional assessment.
- Exclude areas based on criteria in White Paper.
- Geology based only.
- Desk-based study using existing knowledge only.
- Does **not** mean that areas which are not excluded are suitable.
- Applied by British Geological Survey (BGS).

The Criteria



- Criteria Proposal Group and Criteria Review Group.
- Criteria which could be applied anywhere
- Criteria applied with existing information.
- Only consider geology e.g. natural resources and groundwater.
- Consultation in 2007.

Author: Department for Environment, Food and Rural Affairs
Date: May 2007

**SUB-SURFACE EXCLUSION CRITERIA FOR GEOLOGICAL DISPOSAL:
JOINT REPORT OF THE CRITERIA PROPOSALS GROUP (CPG) AND
THE CRITERIA REVIEW PANEL (CRP)**

CONTENTS

Executive Summary

Membership of CPG and CRP

1. Background

1.1 How exclusion criteria fit into the repository implementation process

1.2 Major issues raised by CPG and CRP

2. Development of exclusion criteria

3. Geological issues affecting suitability

3.1 Natural resources

a) Coal
b) Oil and gas
c) Oil shales
d) Industrial minerals
e) Evaporite minerals
f) Metalliferous ores
g) Bulk rock resources
h) Hazardous waste/CO₂ disposal/gas storage
i) Geothermal energy

3.2 Groundwater

a) Exploitable groundwater resources
b) Specific complex or dynamic hydrogeological environments

3.3 Geological stability

a) Earthquakes and faults
b) Uplift and erosion
c) Other geohazards

3.4 Geotechnical issues

a) Rock stress and rock engineering

3.5 Ability to investigate and characterise the repository area

1

Roles and Responsibilities



westcumbria:mrws Managing Radioactive Waste Safely



British Geological Survey
NATURAL ENVIRONMENT RESEARCH COUNCIL



ENVIRONMENT AGENCY



Nuclear Decommissioning Authority

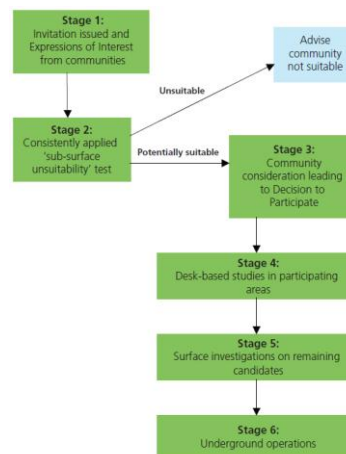


- DECC instructed BGS when partnership were ready.
- BGS applied the exclusion criteria using existing information.
- Draft shared with Partnership, NDA, EA and CoRWM for review as described in white paper.

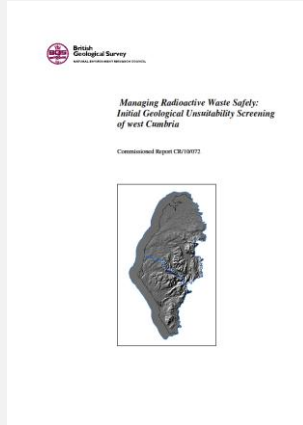
Reiteration of Purpose



- BGS report identifies areas that are unsuitable against the high-level criteria.
- It does not show areas that are definitely suitable.
- It does not determine where a facility might eventually be located.
- Detailed assessment using much more extensive criteria if a community chooses to progress further.



What the Report Means



Does not present any reason why west Cumbria cannot continue to consider whether or not to participate in the site selection process for a geological disposal facility.

3.4 – Presentation from Dr John Powell of the BGS – Chief Geologist for England

British Geological Survey
NATURAL ENVIRONMENT RESEARCH COUNCIL

Applied geoscience for our changing Earth

**Managing Radioactive Waste Safely:
Initial Geological Unsuitability Screening of
West Cumbria**

Dr John Powell* and Dr Colin Waters
Dr Dave Millward and Dr Nick Robins

*Chief Geologist, England

© NERC All rights reserved

Screening Process

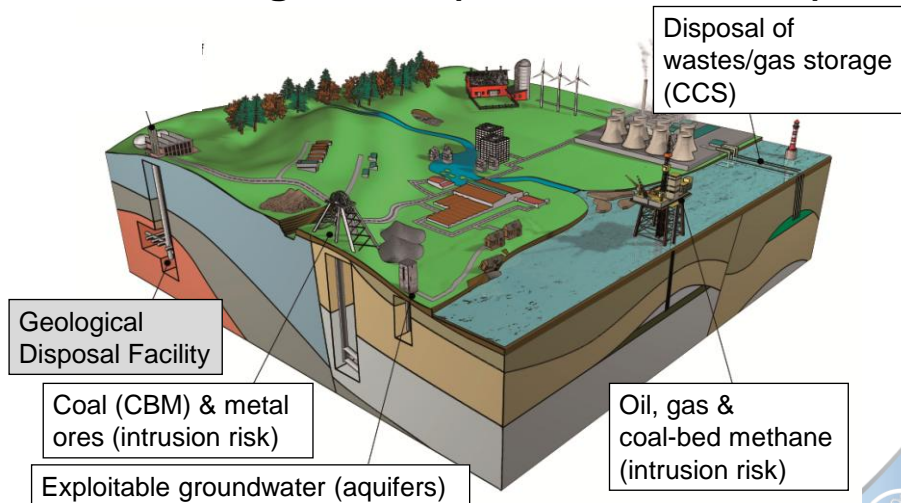
Data sources include:

- Geological map data, cross-sections, interpreted seismic sections & 3 dimensional geological models
- Hydrogeology reports & information including Environment Agency data
- Coal and metalliferous mining information
- Oil and gas exploration data
- BGS publications (regional 'memoirs'; reports etc.)
- Published scientific literature, including summary NIREX reports

© NERC All rights reserved



Understanding the sub-surface screening issues (exclusion criteria)

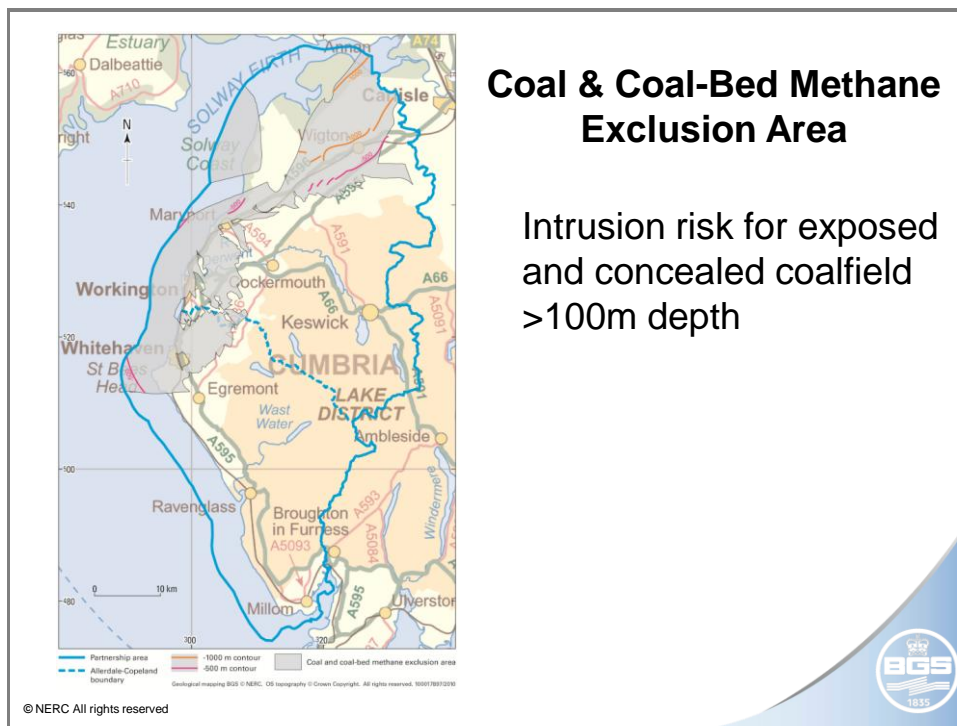


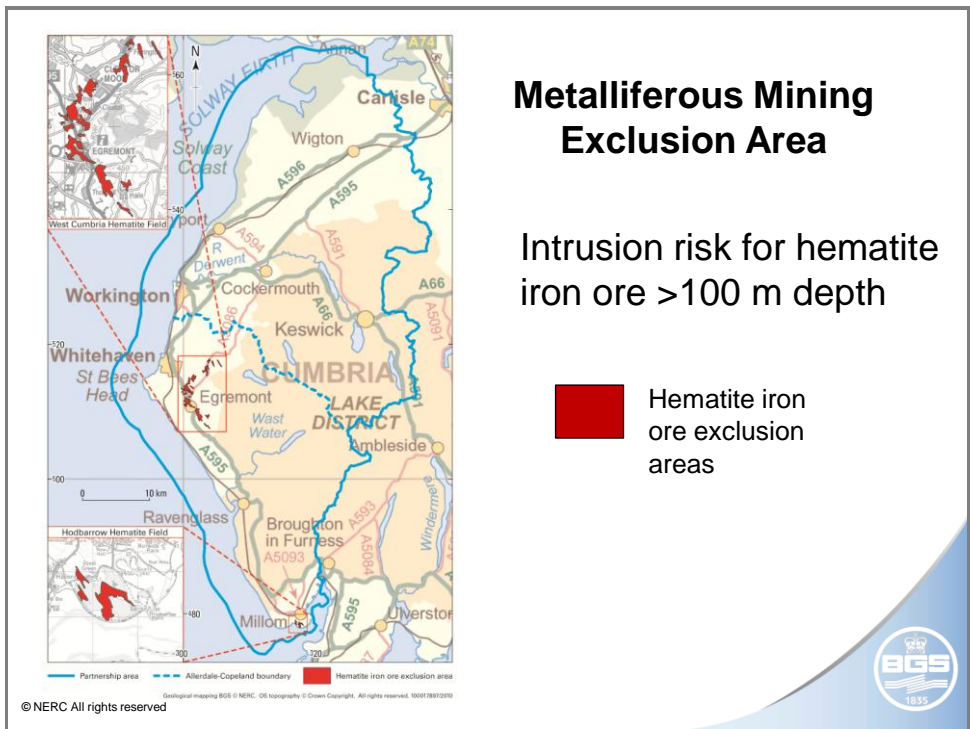
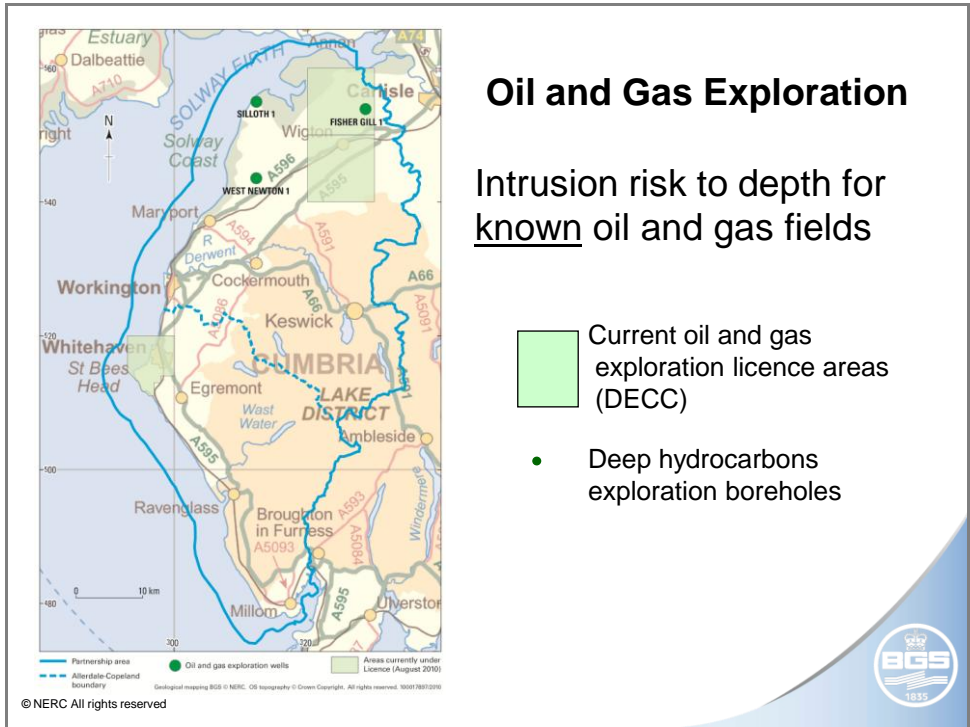
Note: generic diagram not based on West Cumbria

© NERC All rights reserved



MRWS White Paper, 2008	To be applied as exclusion criteria?	Reasons/explanations and qualifying comments
Natural resources		
Coal (and CBM)	Yes	Intrusion risk to depth, only when resource at >100m depth
Oil and gas	Yes	Intrusion risk to depth (for known oil and gas fields)
Oil shales	Yes	Intrusion risk to depth
Metal ores	Some ores	Intrusion risk only where mined at depth, i.e. >100m depth
Disposal of wastes/gas storage	Yes	Only where already committed or approved at >100m depth
Groundwater		
Aquifers	Yes	Where all or part of the geological disposal facility host rock is located within the aquifer
Shallow permeable formations	Yes	Where all or part of the geological disposal facility host rock would be provided by permeable formations that might reasonably be exploited in the future
Specific complex hydro-geological environments	Yes	Deep karstic formations and known source rocks for thermal springs






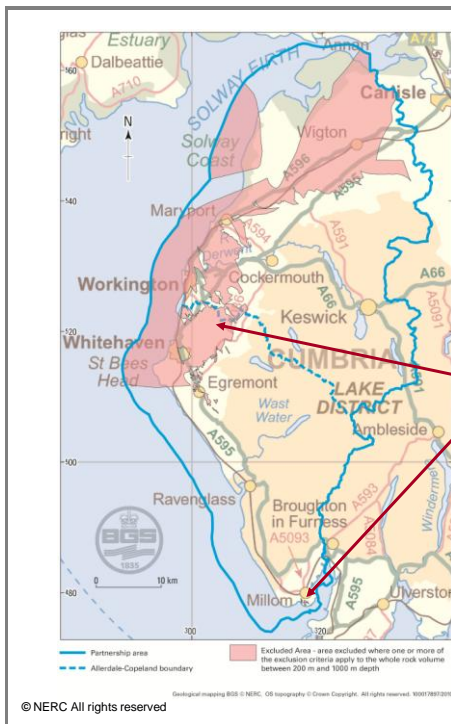




Exploitable Groundwater Aquifers

(Sherwood Sandstone Group Principal aquifer and Carboniferous Secondary aquifers)

-  Sherwood Sandstone Principal aquifer, onshore; excluded rock volume from 200 m to 500 m depth
-  Carboniferous Secondary 'A' aquifers; onshore; excluded rock volume from 200 m to 500 m depth
-  Selected groundwater abstraction boreholes (from EA data)



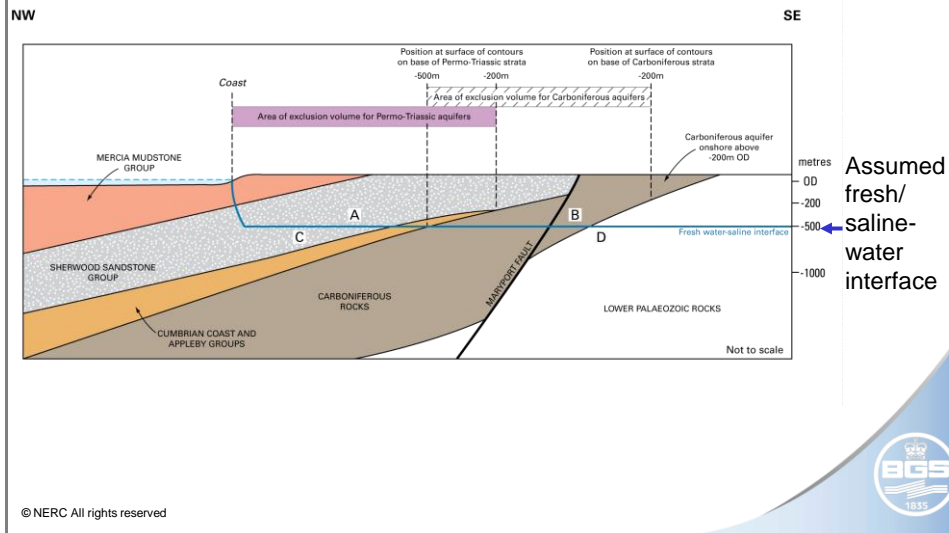
SUMMARY of EXCLUDED AREAS*

*Where whole rock volume is excluded between 200 and 1000m depth

Risk of 'intrusion' for:
Coal & Coal Bed Methane
and
Hematite iron ore



Schematic cross-section of Sherwood Sandstone Primary Aquifer and Carboniferous Secondary Aquifers



3.5 – Presentation from Dr Jeremy Dearlove of FWS Consultants Ltd – peer reviewer of the BGS screening study

Reviewers Statement on the BGS Report “Managing Radioactive Waste Safely: Initial Geological Unsuitability Screening of west Cumbria”

Dr Jeremy Dearlove FGS, CGeol
Principal Consultant

FWS CONSULTANTS LTD

INTRODUCTION – Our Brief

- Peer review and reviewers statement prepared by Dr J P L Dearlove and Dr F W Smith of FWS Consultants Ltd
- Our role:
 - MRWS Partnership peer review criteria:
 - Completeness/reliability/adequacy of data references
 - Other sources of data?
 - Data interpretation methodology
 - Consistency with other published work
 - Robustness and reliability of BGS description
 - Correct application of the (CPG/CRP) published screening criteria (Cm 7386)
 - Comments on BGS conclusions
 - Reviewers Statements required to cover:
 - the overall quality, robustness and reliability of the initial work;
 - the extent to which our comments have been taken on board;
 - the overall quality etc of the report and our view on **whether the Partnership can rely on it as a preliminary screening report at this stage in the process.**

FWS CONSULTANTS LTD

Experience

Dr J Dearlove (Principal reviewer)

- Doctorate in hydrogeology/geochemistry covering radioactive waste disposal in natural rock systems
- Post-doctorate at UKAEA Harwell on radionuclide transport in groundwaters (worked at Grimsell, El Berrocal and Gorleben)
- Senior Lecturer, University of Sunderland in Hydrogeology and Environmental Geochemistry
- Geoscience Group Manager, Westlakes Scientific Consulting
- Currently Principal Consultant, FWS Consultants Ltd
- Experience and knowledge of: west Cumbrian geology and hydrogeology; radionuclide contaminant transport/risk assessments; peer review of nuclear safety cases (Drigg); PhD student supervisor (West Cumbrian Hydrogeology); NIREX programme; Environmental Decision Making/Public Communication of Science/ Public Perception of risk; hydrogeology and contaminated land issues (incl. Sellafield site).
- Chartered Geologist and Fellow of the Geological Society

Dr F W Smith

- Founder/Director of FWS Consultants Ltd
- 30+ years experience in the Mining Industry (Coal/Metalliferous/Non-metals.) with extensive experience in Northern England (incl. Cumbria)
- Chartered Engineer, Fellow of the Institute of Materials, Minerals and Mining and highly experienced geologist

FWS CONSULTANTS LTD

Summary of Key Issues Arising

MUST be remembered that the BGS report is an **INITIAL DESK STUDY SCREENING REPORT**

- 1st stage of a longer, more detailed, process (**Initial**)
- Based on currently available information (**Desk Study**)
- Rules out areas that **DEFINITELY COULD NOT** host a geological disposal facility based on CPG/CRP criteria (**Screening**) – this **does not** mean that if an area has not been screened out at this stage it has the potential to become a geological disposal facility, it means that from **currently available information** it cannot be screened out and that further information is required (to be gathered later in the process) in order to make a carefully considered evaluation

- **4 KEY ISSUES ARISING RELATING TO REVIEWERS BRIEF/TERMS OF REFERENCE**

1. Initial draft report did not include any evaluation of **SHALE GAS** resources. Issued report now includes shale gas and thus meets peer review criteria.

FWS CONSULTANTS LTD

Summary of Key Issues Arising

2. Initial draft report did not include any evaluation of metalliferous ore deposits (other than hematite) as those within the partnership area were considered to be too shallow (<100m), and thus outside the CPG/CRP screening criteria. Following clarification of the partnership area boundaries and confirmation of deposits/areas considered by BGS, the statement has been suitably justified and is accepted.

FWS CONSULTANTS LTD

Summary of Key Issues Arising (cont.)

3. The original report identified *former hematite deposits* as unsuitable due to the potential risk of intrusion from future exploration. Original areas shown appeared to be worked out areas. It is unlikely that worked-out areas would form the target for future exploration and a wider area that included potential (unworked) deposits should be shown. Issued report shows horizontal extensions of orebodies (which include worked-out areas) locally present below 100m depth, based on available information. This meets the peer review criteria.

FWS CONSULTANTS LTD

Summary of Key Issues Arising (cont.)

4. Original report was an *interpretation* of the CPG/CRP screening criteria, now replaced in issued report with direct quotes from the CPG/CRP screening criteria report.

The BGS have retained the interpretation that any Geological Disposal Facility would only be constructed at depths IN EXCESS of 200m below ground level, and therefore this represents an upper level "cut-off" depth for any *excluded aquifer* (e.g. page 42) (but not for any other criteria where the cut-off level is 100m depth).

This appears to meet the spirit of the CPG/CRP screening criteria and may, at this preliminary stage, be considered to be an acceptable pragmatic approach. The lower level cut-off depth of 500 m (anticipated level below which groundwater will be saline and therefore not exploitable) is a CPG/CRP criteria.

FWS CONSULTANTS LTD

Summary of Key Issues Arising (cont.)

4. (Cont.)

Also concern regarding the definition of what constitutes an “exploitable aquifer”, and some inconsistency in the application of the CPG/CRP criteria in connection with this.

In issued report, an exploitable/potentially exploitable aquifer belongs to the **Major Aquifer** or **Secondary Aquifer A** categories established by the Environment Agency (consistent with the CPG/CRP criteria). Current exploitation of aquifers based on available EA groundwater abstraction licence data (although this biases exploitation towards public water supply as many smaller private water supplies not required to be licensed).

Sherwood Sandstone Gp, Carboniferous strata (incl. Pennine Coal Measures, Yoredale Gp and Great Scar Limestone Gp) and Brockram/Cumbrian Coast/Appleby Gp, from depths of between 200 and 500m are now **excluded** as potential host rocks for a geological disposal facility as they contain exploited or potentially exploitable groundwater resources.

The BGS report thus meets the peer review criteria.

FWS CONSULTANTS LTD

Key issues – Non-review criteria

- **NON-REVIEW CRITERIA** - Accessibility of report to non-geologists

General comments on spelling, grammar, references, accuracy/validity of statements and clarification of text have been considered and included by BGS where appropriate. Report remains necessarily technical (but potentially inaccessible to a non-geologist)

FWS CONSULTANTS LTD

CONCLUSIONS

The report can be relied upon by the West Cumbrian MRWS Partnership as a preliminary screening report at Stage 2 in the site selection process

....(although you may need some help understanding parts of it!)

FWS CONSULTANTS LTD

The second peer reviewer (Professor Agust Gudmundsson, Royal Holloway University of London) was not available to present at the meeting, but copies of his full report and reviewer statement were made available on the day.

For copies of the reports from both peer reviewers on the first draft of the BGS report, and their statements on the final draft, see Documents 110 to 114 on the Partnership website.

3.6 – Statement from the Environment Agency

As the environmental regulator for the nuclear industry in England and Wales, the Environment Agency (EA) is responsible for making sure that any future GDF meets the required high standards for protecting people and the environment while it is being developed and operated, and after it has closed. In addition, the EA is the statutory body responsible for the protection and management of groundwater resources in England and Wales. At this stage in the MRWS process they do not have a statutory responsibility to regulate. They are therefore providing advice to RWMD and supporting the Partnership, and they were glad to be involved in reviewing the draft report.

With regards to the BGS study, the fact that it was presented as a detailed scientific report assured the EA that it was a thorough and well thought through process, and it is apparent that the BGS brings extensive expertise to the study. During the review process, the EA made several suggestions, both to improve the robustness of the screening, and to aid the viewing of the report by different audiences. They also provided some information to the process about the water sources that they hold licences for. They were pleased that the BGS has used this information, and has taken on board their comments in finalising its study.

The EA can say that, in their view, the study, as it has been finalised, can be relied on at this stage in the screening process.

3.7 – Statement from the Committee on Radioactive Waste Management

The Committee on Radioactive Waste Management (CoRWM) is the independent committee that was established to scrutinise and advise on the implementation of the MRWS process.

Within CoRWM, a number of individual members evaluated the first draft carefully to inform themselves of its content, and to evaluate whether the screening criteria had been applied as intended, whether the underlining information had been used and explained appropriately, and whether the report conveyed this in a clear and accessible manner.

Their principle concerns were over the structure of the initial draft report and a lack of clarity, and these comments were passed on. CoRWM have not commented on the final draft but will be looking at it in due course. It was noted that CoRWM were not formal peer reviewers of the study, which they understand has been stated inaccurately in previous documentation about the study.

CoRWM's view is that the screening criteria have been applied as intended in the White Paper.

3.8 – PSE2

A presentation was given by the Programme Manager on what will happen in the PSE process as a result of the BGS study, together with a reminder of the role of the Partnership during PSE2. There was a further discussion on this topic in the afternoon session - see Section 4 for details and for copies of the presentation slides.

3.9 – Criteria in the Work Programme relating to the BGS study

The questions and conversations that followed the presentations were focused around the opportunity to discuss the implications of the BGS study with regard to the following criteria in the Partnership's Work Programme:

- **Criterion 2a** – Whether the Partnership is confident in the integrity of the BGS screening report.
- **Criterion 2b** – Whether there are sufficient areas remaining in West Cumbria after the initial screening to make further progress worthwhile.

There was a reminder that these criteria do not necessarily need to be satisfied definitively at this stage, as the BGS report is included in the public and stakeholder engagement/consultation process in PSE2, and the outputs and findings in relation to geology will come back to the Partnership for further consideration in 2011.

Questions and areas of discussion are summarised in 3.10 – 3.22 below

3.10 – Percentages of areas *not* excluded and within the National Park

The BGS were asked to provide the following information:

1. The percentage of the area that is left in after the exclusion zones have been taken out.
2. The percentage of the area that is left in that is within the Lake District National Park boundary.

An estimate of 60-70% for the first question was provided on the day. The following information was provided by the BGS *after* the meeting, and the calculations are based upon the Partnership area *including* the offshore 5km zone:

1. The % of the Partnership area **not** Excluded = 74.5%.
2. The % of the Partnership area **not** Excluded that is National Park = 55.1%.

3.11 – Comparison with the area looked at in the 1990s by Nirex

A further question was asked about what percentage of the area that is not excluded was previously *not* looked at in the 1990s by Nirex. The BGS confirmed that the areas that *were* previously looked at in the Nirex studies were the areas between St Bees and Ravenglass, including Egremont, and the area adjacent to the A595 on the BGS map.

3.12 – Request to see the map overlaid onto an Ordnance Survey map.

A discussion was held about the possibilities of overlaying the BGS map onto a larger scale Ordnance Survey map, and if so what scales would be possible.

The BGS stated that some of the geological data they used in this initial desk-study was derived from published maps at a 1:500,000 or 1:850,000 scale, and that it is very difficult to display such high level information when extrapolating onto more detailed base maps. They and DECC have been looking into illustrating the Exclusion Areas shown in Figure 2 of their report on a 1:250,000 scale Ordnance Survey base map (which could then be enlarged to 1:100,000 scale) and this representation could potentially be brought to the Community Drop-in Events.

3.13 – Reminder that surface facilities could still be sited in excluded areas

There was a reminder that the surface facilities of a GDF may not necessarily be directly above the underground facilities, and it was confirmed that areas that are excluded in the study are *not* excluded for the surface facilities. The NDA confirmed that, whilst it is difficult to provide precise figures at this stage, there are no reasons why the surface facilities could not be laterally displaced by 10km. It is therefore possible that the surface facilities could be in the excluded area, with the underground facilities being in the non-excluded area.

3.13 – Public perceptions due to previous Nirex process in the 1990s, and clarification of the differences between this study and the Nirex process

A discussion was held about the differences between this study and the Nirex investigations in the 1990s, and the need to be able to answer questions from members of the public about this.

It was noted that the key difference, from a technical perspective, is the criteria against which the areas were evaluated i.e. the planning application for a rock characterisation facility in the 1990s had very different criteria to those used for the BGS report.

Partnership members acknowledged this, but it was strongly emphasised that the real issue for them is about what members of the public will want to know, and this explanation is not likely to be sufficient or satisfactory. Many of the communities in West Cumbria are extremely knowledgeable and will not simply accept the answer that it is a different process. For example, people will want to know why the criteria are different, and will also want to discuss specifics about the geological aspects. It was additionally noted that the Partnership also needs to be able to convince people who haven't got a high level of knowledge, to avoid people feeling that they are having "the wool pulled over their eyes".

It was noted that the MRWS process in the White Paper was designed in a national context, not specifically for West Cumbria, where the situation is not simple due to the history of Nirex. The perception for many people is that areas that were perceived as

having been rejected as unsuitable in the Nirex process, are now *not* excluded as a result of this screening study.

It was agreed that Partnership members need to think through how they are going to handle this, as a lot of people are going to be “astounded” that the area could be revisited again when, in their minds, it had already been excluded.

3.14 – Reference material and information about the Nirex process

It was suggested that it would be useful for Partnership members to have some more understanding of the issues related to Nirex, including presentation materials being made available to enable members to deal with questions, and explain how the NDA believe that technology/design and engineering has moved on since that time.

DECC and the Communications Adviser agreed to publish a more accessible version of DECC’s background document/Q&As on the Nirex process.

There was a reminder that there are a number of frequently asked questions (FAQs) on the Partnership website about this topic, and that these are in the process of being updated with information about the BGS study. The briefing note on *‘Why the Siting Process is Different to Nirex’* (Document 91) also addresses these issues, including some factual points about what the Nirex work did and didn’t do, and reasons why the planning application was turned down.

It was agreed that Partnership members need to familiarise themselves with the content of the information that is already available.

The Programme Manager will liaise with the BGS and DECC about materials for the Community Events, including overlaying the BGS map onto an Ordnance Survey map, and interactive representations of 3-dimensional/topographical maps.

3.15 – Reasons for the Nirex planning application being turned down

There was a reminder that Nirex’s application to construct a rock characterisation facility was turned down for a range of reasons including technical issues with its application, *and* doubts about the suitability of the geology at the site (for more information see Document 91, the Briefing Note on *‘Why the siting process is different to Nirex’*). It was acknowledged that there are a lot of misunderstandings about the reasons why the Nirex application was turned down and this is what needs to be addressed.

It was noted by the EA that, at the time of the Nirex planning application, Her Majesty’s Inspectors of Pollution (HMIP – the predecessors to the EA) did not have any regulatory role in terms of planning permission. There was no application for radioactive disposal and no safety case submitted, therefore HMIP were not able to comment or reach a judgement on the feasibility or safety of a GDF at that site.

It was also noted that Cumbria County Council (CCC) played a key role in stopping Nirex continuing to look at the area in the 1990s, and that they objected strongly to the Nirex application. It was further noted that the Partnership needs to be clear that CCC, and any other Partnership member, would not support a GDF if they were not convinced that it was going to be safe.

3.16 – Response to a letter from Professor David Smythe

Reference was made to a letter in local newspapers from Professor David Smythe, in which he said that it is not possible to safely design and deploy a GDF in such a mountainous area. It was acknowledged by the peer reviewer that it is indeed a geological fact that mountainous areas do have higher hydrostatic heads, as pointed out

by Professor Smythe. However, he felt the assessment of the unsuitability of all of West Cumbria was a little oversimplified.

The NDA stated that, at this stage, they cannot say that it is, or is not, possible to site a GDF in a mountainous area. There was a reminder that the BGS report is not saying that the geology *is* suitable, and that the future work that needs to be done will address the issues raised by Professor Smythe in his letter. It was noted by the NDA that they, as developers, would not want to build a GDF if it could not be done safely.

3.17 – Aquifers and protection of ground water

A discussion was held about the questions that are bound to be asked about whether it is possible to build a GDF below an aquifer, as there are rock volumes in areas that have not been excluded that are below aquifers.

The NDA confirmed that this would need to be taken into account both with regard to the safety case of disposing near to an aquifer, and also the design of a facility e.g. tunnels that are designed/sealed to prevent water ingress. They noted that these are issues that would need to be addressed at a later stage, but that they do not prevent the process from moving forward at this stage.

The EA reiterated their statutory responsibility to protect ground water, and stated that they would “very closely” examine any proposals to site a GDF near an aquifer.

3.18 – Fault lines

Concerns were expressed that there are areas containing fault lines that have not been excluded by the study. The BGS confirmed that, based on the initial published exclusion criteria, they were *not* asked to consider fault lines and other aspects such as seismic activity and fractures at this initial stage in the MRWS process. As pointed out in the BGS report, any future activity/developments in investigating potential sites would require detailed surface and sub-surface investigations, such as boreholes and seismic interpretations, to investigate the geology in more detail.

It was noted that Professor Agust Gudmundsson, the second peer reviewer, made the point very strongly in his report that fractures and fault lines must absolutely be looked at if the process goes forward.

3.19 – Information for members of the public and stakeholders

It was acknowledged that a lot of the technical information and visual representations/figures in the BGS report are difficult to present for people with a non-geological background. It was agreed that there is a need to present much of this technical information in a way that members of the public and stakeholders will be able to understand.

It was agreed that DECC and the BGS will liaise about providing information, displays and 3-dimensional models for the Community Drop-in Events, and other events/publications.

It was additionally noted that some of the colours used in the different maps in the report are very close in colour and could therefore cause confusion. The BGS confirmed that the colours on the source documents are different, but it was noted that the printing process on different printers does not always make this apparent, and there was a request for this to be considered going forward.

3.20 – Dealing with questions and challenges going forward

It was acknowledged that the debate on this topic is likely to get more intense, and will include responses in the press. A discussion was held about how all of this will be channelled, and the need for the Partnership and its members to be able to respond to questions, challenges and concerns that are raised, both in the moment and more formally.

There was a reminder that a lot of the questions that will be asked are *not* questions for the Partnership, but are questions for the people who commissioned and carried out the report i.e. DECC and the BGS. Observing members, the BGS and the peer reviewers are therefore being drawn in throughout PSE2 to support the Partnership in answering questions on these topics.

It was confirmed that there will be a process for dealing with questions that cannot be immediately answered, and further information/responses to new questions will be circulated to Partnership members and published on the website as soon as they are available.

3.21 – Level of satisfaction with criterion 2a – confidence in the report

It was agreed that, as the Partnership had only just received the report, members need to have time to read it, and reflect on their responses and reactions to it, before they can consider whether they are happy that it meets criterion 2a. It was noted that if they were to go on the comments of the EA and the peer reviewers, then the answer would probably be yes, however that did not need to be decided today.

There was a reminder that it is not the Partnership's report, that it is a report commissioned by the Government against Government criteria, and that all it really says is that all of West Cumbria has not been ruled out and that there are still some parts of West Cumbria that can go forward for further review *if* West Cumbria decides to move forward.

3.22 – Way forward and actions

It was agreed that Partnership members should take the report away to read and reflect on for further discussion in the future.

It was also agreed that it is important for all Partnership members to take responsibility for familiarising themselves with the information in the BGS report. To support Partnership members in dealing with questions and challenges from members of the public and stakeholders during PSE2, the Programme Manager will look into the possibility of holding a seminar for members, and will also discuss the options for ongoing support from the peer reviewers.

All of the questions, concerns, issues and views raised during PSE2 by members of the public and stakeholders about the BGS study, will be collated and summarised early in 2011, together with the Partnership's responses to them.

With regard to the Partnership taking a view on criterion 2b, there will be a number of Partnership meetings at a later stage in the process, where issues such as these will be revisited to determine the Partnership's levels of satisfaction against all of the criteria.

4. Public & Stakeholder Engagement Round 2

4.1 – Overview of PSE2

The Programme Manager gave a presentation about the plans for PSE2, including: an overview of the key elements of the various engagement activities, where PSE2 fits into the overall process, and a reminder of the role of the Partnership during PSE2. The formal timescales for PSE2 are 8th November 2010 to 11th February 2011.

Attendees were encouraged to sign up for Discussion Packs and take away copies of leaflets/flyers for the Community Drop-in Events.

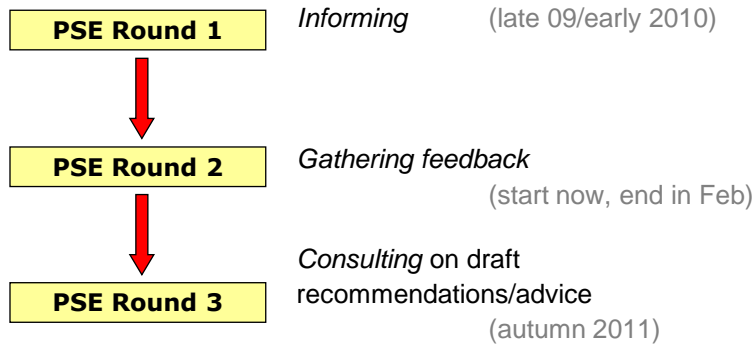


What is the Partnership for?

“... make recommendations to Councils on whether or not to participate in the Government’s siting process, without commitment to eventually host a facility”

westcumbria:mrws

3 parts to one conversation



westcumbria:mrws

What is PSE2 for?

Objectives:

1. Demonstrate changes from PSE1
2. Build understanding, including BGS study
3. Seek input on key topics
4. Understand wider issues
5. Adapt activity and provide feedback

westcumbria:mrws

Engagement Topics

In addition to disseminating BGS results, seeking feedback on 3 topics:

- How public views will inform conclusions
- Impacts and Community Benefit
- How communities should be further involved

westcumbria:mrws

Methods

- Newsletter to households
- Libraries, surgeries, supermarkets etc
- Media and advertising
- Website
- Community Drop-In Events
- Discussion Pack
- Residents' Panel
- Stakeholder Organisation Workshop
- Direct invitations and meetings

westcumbria:mrws

In summary

- Second round of PSE, prior to final consultation (autumn 2011)
- Seeking feedback on 3 topics, in addition to sharing BGS results
- Public can choose if & how they get involved

westcumbria:mrws

PSE1: Public said... We did...

- | | | |
|-------------------------------------|---|--|
| Concerned about ethics and security | ➔ | <i>Added tasks to Work Programme</i> |
| Concerned about impact on tourism | ➔ | <i>Commissioning independent research</i> |
| Need to understand pros and cons | ➔ | <i>Inviting, and paying for, alternative views</i> |
| Raise awareness more | ➔ | <i>Doubled investment in communications</i> |

westcumbria:mrws

4.2 – Updates on key engagement strands

4.2.1 – Advertorials

A series of advertorials were due to be published in most local papers during the week of the meeting. Further advertorials will be published in remaining papers before the Community Drop-in Events in late November and early December (see 4.2.5 below for dates).

4.2.2 – New website

The new Partnership website is now live, and is designed to be more accessible and user-friendly.

4.2.3 – Discussion Pack

The Discussion Pack is about to go live and will be sent out to 100s of groups in Cumbria. It contains a 15 minute DVD, information sheets and a questionnaire. The main targets are schools and community groups: it is currently anticipated that more than 100 discussions will be run.

The Discussion Pack is a new form of engagement activity for the Partnership and a discussion was held about how it will be used.

The aims of the Discussion Pack are to have a mechanism for unsupported discussions, and to enable a significant amount of deliberation out in the community for a relatively cost effective amount of money.

This new form of engagement was welcomed by several Partnership members. It was acknowledged that the Partnership being in attendance during discussions can put people off, and that this mechanism allows people space to input their views without feeling imposed upon.

Concerns were expressed about the dangers of people using the pack without support from people who know the answers to some of the questions that are bound to be asked, especially in schools.

Whilst it was acknowledged that the discussions will not be supported, a number of things have been put in place to manage concerns about people being given incorrect information, or groups going off at tangents/getting the wrong end of the stick. These include: several rounds of drafting with comments from a wide range of people, pilot sessions with younger and older people, and having the pack reviewed by the Plain English Campaign. Support is also available to group organisers via email or phone.

Additionally, approximately half of the discussions are being run by groups of people that the Partnership has developed connections with e.g. Connexions, Cumbria CVS, Cumbria Farmers Network, and their facilitators have been through a training course and briefing provided by 3KQ to standardise quality.

It was also confirmed that the response form in the pack allows people to request responses to unanswered questions.

The need to monitor how the Discussion Pack works was highlighted, and assurance was given that this will happen.

4.2.4 – Newsletter to households

A newsletter to all households will be sent from 8th November onwards. As before, this will go to around 79,000 households in West Cumbria as well as being publicised across Cumbria more widely.

4.2.5 – Schedule of events in PSE2

The following dates are booked:

Date	Event	Venue	Time
19 Nov	Community drop-in event – Millom	Network Centre	Drop in 12 - 8pm
20 Nov	Community drop-in event – Barrow	The Forum	Drop in 10am - 4pm
22 Nov	Community drop-in event – Carlisle	Old Town Hall	Drop in 12 - 8pm
23 Nov	Community drop-in event – Whitehaven	Civic Hall	Drop in 12 - 8pm
24 Nov	Community drop-in event – Keswick	Crosthwaite Church Hall	Drop in 12 - 8pm
25 Nov	Community drop-in event – Wigton	Market Hall	Drop in 12 - 8pm
26 Nov	Community drop-in event – Calderbridge	Village Hall	Drop in 12 - 8pm
29 Nov	Community drop-in event – Penrith	Methodist Church Hall	Drop in 12 - 8pm
30 Nov	Community drop-in event – Kendal	Town Hall	Drop in 12 - 8pm
3 Dec	Community drop-in event – Workington	St Michael's Church	Drop in 12 - 8pm
13 Jan	Stakeholder Organisation Workshop	Hunday Manor Hotel	Whole day
Date tbc	Residents' Panel	tbc	tbc

A discussion was held about the number of people expected to attend each drop-in event and whether there is a back-up plan in place to deal with very few or lots of people. There was also some debate about how much interest there was likely to be at the events outside West Cumbria, and it was acknowledged that this is anticipated to be very different depending on the location.

A review of all aspects of the events is planned after the first few have taken place. The plan for the early events is to be ready to deal with large numbers of people, and this will then be scaled back if necessary.

4.3 – The role of Partnership members in PSE2

Following the presentation and updates, Partnership members were asked to consider how comfortable they feel about the PSE2 plan, and their own role in it. They were asked to reflect individually on what they are going to do, or do differently, from PSE1, and then share and discuss their responses to this reflection in small groups.

The responses are summarised in 4.4 – 4.8 below

4.4 – Preparation and training

The need for Partnership members to be completely prepared was noted, e.g. for Community Drop-in Events, and talking to people in the community about the BGS report. It was confirmed that there will be a written briefing process in place for everybody involved in the Community Events, to cover aspects such as responding to questions on certain issues, how to note down people's comments and so on.

4.5 – Mindset, and ownership of the issues that are raised

It was expressed by some members that the Partnership needs to take more ownership for the concerns that people raise and the outcomes of PSE2. It was also felt that the issue of people thinking that the Partnership doesn't really care needs to be addressed.

It was pointed out that the questions that are asked by stakeholders are almost always the questions that the Partnership and its members should be asking themselves, and that there should be a sense of genuinely welcoming what is coming in the way of questions, concerns and challenges from members of the public and stakeholders.

4.6 – Use of broadcast media

It was acknowledged that the broadcast media is very influential, and that broadcasters and journalists themselves need a better understanding of what is happening. It was noted as being vitally important, and a duty, to engage with as many broadcasters and journalists as possible throughout West Cumbria and the rest of Cumbria, to explain more about the nature of voluntarism and the MRWS process, and build understanding of why and how the Partnership and West Cumbria are involved in the process.

The Communications Adviser agreed that broadcast media is the most effective way to get this information out. It was, however, acknowledged that this is not going to be an easy achievement. A number of things need to happen including continuing to put out stories that the media can cover. In addition, several conversations have already begun about e.g. running more feature-length items, and potentially including media representatives on the planned international visits.

4.7 – Support for Partnership members during the process e.g. geological helpline, input from peer reviewers

It was agreed that Partnership members need to equip themselves to be able to deal with questions about geology, as it is such a significant issue and there are bound to be a lot of questions. It was suggested that it might be useful to have support from the peer reviewers e.g. a helpline supported by them. The Programme Manager and FWS Consultants Ltd agreed to discuss the option of ongoing support.

It was also suggested that broader questions should be channelled through the Programme Manager. The need for an ongoing audit of the FAQs was also discussed, to ensure that they cover the range of topics that will be raised during PSE2.

Support to Partnership members is also available from the Communications Adviser, Ian Curwen (Communications Manager at Copeland Borough Council), the 3KQ team, and all members of the PSE Sub-Group.

4.8 – Role and responsibilities of Partnership members

A discussion was held about the need for Partnership members to ensure commonality in their responses. There was a reminder that this only applies where the Partnership has taken a view, and that members should be clear about when they are talking on behalf of the Partnership, and when they are talking on behalf of their own organisation. It was also noted that it is OK to express individual views.

The responsibility of all members to keep up to date and fully informed with the FAQs, briefing notes and other relevant information was highlighted.

5. Credible Support

5.1 – Background

At the last meeting on the 5th of August, the Partnership discussed what it needs to do to reach a judgement about criterion 6a in the Work Programme: *'whether the Partnership's recommendations are credible given public and stakeholder views'*. Fred Barker had prepared a discussion paper to help the Partnership to consider the issues – the latest draft was circulated prior to today's meeting and has also now been published on the Partnership website (Document 74).

There was a discussion at the meeting on the 5th of August about whether the Partnership should have a quantitative indicator to inform its recommendations to the decision making authorities (for further information about this discussion see Document 93, section 5). The Partnership decided that there should be a quantitative indicator, and that it should be net support. The precise wording of the indicator, however, was under question. The Steering Group had discussed this and a slightly adapted draft was brought to today's meeting for final approval on what will be taken into PSE2 for consultation.

5.2 – Change of wording with Ipsos MORI

There was an issue about whether the question used in the Ipsos MORI awareness tracking survey to determine support matches the proposed quantitative indicator. Ipsos MORI has been consulted, and the wording of this question has now been changed from *'in support of'* to *'in favour of'*. This change has been reviewed by Ipsos MORI's legal advisers.

5.3 – Concerns raised by CALC

CALC have itemised 3 areas of concern that they have raised about using net support as a quantitative indicator. They are happy to accept what has been agreed on the basis that the Partnership is consulting on it, but they will want to come back to it after PSE2 for further consideration.

They were asked to share these concerns, which are detailed below:

1. The public need to appreciate that whilst the indicator might show that there *is* net support, this could be based on the majority of people *not* having said that they support participation e.g. there could be 20% of people who don't know, 45% in support, and 35% not in support, meaning that 55% of people have not said that they actively support participation.
2. CALC feels that the Partnership needs to recognise what is happening with the Government in this general area, particularly with regard to the Localism Bill that is being drafted at the moment. Voluntarism is unique at the moment in the context of MRWS, but in the Localism Bill it will no longer be unique. CALC stated that, in the draft bill, the threshold for community support via a referendum will be 75%, and the potential gap between that and 45% (in the example above) is very big. CALC considers that the Partnership needs to recognise and consider this.
3. With regard to the people who are actually going to be surveyed, CALC are very happy that Ipsos MORI are doing a survey that is statistically valid for the whole of Cumbria. However, in order to meet paragraph 6.22 in the White Paper, it is necessary to demonstrate that the views of the community within a participating area have been taken into account post a decision to participate. It is possible that people who live in areas that were excluded from the process for the

underground facilities by the BGS study might sway the vote, and therefore the opinions of people in the non-excluded areas could potentially be overridden by those of people in the excluded areas.

A question was asked about whether the opinion survey will be adjusted to take into account specific areas where the underground facilities of a GDF cannot be sited on the basis of the BGS study, as it was acknowledged that it is potentially easier to say yes if you know that it's not going to be under you.

It was agreed that this will be discussed at the end of PSE2.

5.4 – Remaining awareness tracking surveys

It was confirmed that there are 2 more waves of awareness tracking surveys, one towards the end of PSE2 and one towards the end of PSE3. It is in the final stage of engagement where the quantitative indicator becomes relevant, however it is important to plan now for getting it right.

There was a reminder of the Ipsos MORI briefing note (Document 109, available on the website and circulated at the meeting) on some of the practicalities and technicalities of using surveys. This briefing note was put together by Ipsos MORI and 3KQ to address some of the issues discussed at the last meeting (see Document 93, section 5.4).

5.5 – Engaging with young people through phone surveys

A question was asked about whether Ipsos MORI has addressed the fact that an increasing number of young people rely on mobile phones rather than landlines, so are therefore unlikely to be contacted. The Programme Manager agreed to ask Ipsos MORI about this.

5.6 – Way forward and actions

It was agreed that the proposals for using net support as an indicator would be taken into PSE2 for people to consider and comment on, and that the outcomes of this consultation will be considered by the Partnership at a later stage alongside the other issues raised.

The Programme Manager will check the practicalities of carrying out the final survey to the levels of robustness raised by CALC.

Fred Barker, the author of the paper on Credible Support and Decision Making (Document 74), will consider the issues raised by CALC in preparation for the later discussions by the Partnership.

6. Way Forward and Actions

6.1 – BGS report

Partnership members will take the BGS report away to read and reflect in preparation for PSE2 and for future discussion. The Programme Manager will consider further methods for supporting Partnership members in being able to respond to questions and responses from members of the public and stakeholders (e.g. geology seminar, support from the peer reviewers). The BGS and DECC will prepare accessible materials for the Community Drop-in Events.

6.2 – PSE2

The schedule of events for PSE2 will commence in early November.

6.3 – Credible support and decision making

The use of net support as a quantitative indicator will be taken into PSE2 for people to consider and comment on.

6.4 – Dates

The forward programme of meeting dates is provided below as a reminder. Members of the public are welcome to observe the Partnership meetings (right hand column). Please contact the Secretariat for details and registration on 0800 048 8912.

Steering Group meetings 2010:	Partnership meetings 2010:
10 November	
24 November	10 December <i>(The Copeland Centre, Whitehaven)</i>
Steering Group meetings 2011:	Partnership meetings 2011:
5 January	19 January <i>(Hundith Hill Hotel, nr Cockermouth)</i>
2 February	
16 February	3 March <i>(Venue tbc, Copeland)</i>
16 March	
30 March	14 April <i>(Venue tbc, Allerdale)</i>

6.5 – Actions. The following actions were agreed:

	Action	Who	By when
1	Arrange briefings for constituents/members before the relevant PSE2 events. <i>(Carried forward from last meeting with a reminder of the importance and the responsibilities of members to do this.)</i>	All members	Mid Nov
2	Provide precise figures for: a) The percentage of the area on the BGS map that has <i>not been</i> excluded. b) The percentage of the area that has not been excluded that is included within the Lake District National Park boundary.	John Powell, BGS & DECC	Done - see section 4.8
3	Produce version of DECC Q&As for publication.	DECC/Paul	5 Nov
4	Produce copies of the BGS report map overlaid onto an Ordnance Survey map, and interactive representations of 3D/topographical maps, for use at the Community Drop-In Events.	BGS/DECC	15 Nov
5	Consider request for further information on the timelines of when wastes might arrive.	NDA	End Nov
6	Check the practicalities of carrying out the final Ipsos MORI survey to the level of robustness that would be required to address the concerns raised by CALC.	Rhuari	10 Dec
7	Put John Rennilson in touch with Ipsos MORI regarding survey techniques: targeting of landlines only, the age profile of the target group, sample size.	Rhuari	Done
8	Draw up a set of draft principles to meet the Work Programme item on Inventory, to be reviewed by the Steering Group on 10 th November and brought to the next Partnership meeting on 10 th December. <i>(Carried forward from last meeting – delayed due to the postponements.)</i>	Fred and local authority officers	3 Dec for circulation to the Partnership
9	Provide a summary note on related aspects including Fixed Unit Price, funded decommissioning programmes etc. <i>(Carried forward from last meeting.)</i>	Andrew Craze, DECC	3 Dec for circulation to the Partnership
10	Prepare a brief paper and presentation to the Partnership on how a siting process would need to fit in with local (and potential national) statutory planning processes. <i>(Carried forward from last meeting - Stewart to liaise with Programme Manager about where this fits into the Work Programme.)</i>	Stewart, Fergus, Charles	10 Dec
11	Circulate draft meeting report to Partnership attendees.	Jane	5 Nov
12	Comment on draft meeting report.	All attendees	12 Nov
13	Circulate final draft of meeting report and publish on website.	Jane	19 Nov

7. Public Questions/Comments

7.1 – Question about boundaries used by the BGS

With regard to the area that the Partnership is going to consider, when we get to the estuaries such as the Solway Firth it clearly isn't 5km offshore. What are we defining as the boundaries, as clearly those areas are closer to Scotland than they are to Cumbria?

BGS response

At the meeting, the BGS stated that they used the centre line of the estuary, and that the boundary was defined on a topographical map/base. They were asked to provide further details about the methodology that was used, and the following information regarding the boundary lines offshore was provided after the meeting:

- **Solway Firth:** The boundary of the Partnership area in the Solway Firth is taken from the Ordnance Survey topographical mapping showing the England-Scotland boundary in this area.
- **Duddon Estuary:** The boundary of the Partnership area in the Duddon Estuary is also taken from Ordnance Survey topographical mapping delineating the boundary between Copeland Borough and Barrow-in-Furness Borough.

7.2 – Observation about the Nirex situation

Regarding the comments about the old Nirex situation, I think it's a challenge to reconcile this broad brush approach that's being done now, with the detailed history that we've got in certain areas within West Cumbria. I think we need to *overtly* explain that. There is that imbalance, there's definitely that elephant in the room, so it needs to be addressed proactively rather than wait for it to be challenged.

7.3 – Question about factoring in other developments

A lot of this is about the geology and the science, and a lot will be about politics and policies that are going around the county. At what point are you going to produce a map that includes other developments and prospects of other things? For example, I note the map and the part that shows Millom. There are other landowners down there such as RWE and the proposed new nuclear site, there could be housing developments, a factory and so on in other places. People are going to ask whether we have to get into this process before we discuss those, and how will the benefits of those other developments be weighed up against a repository, whether head-works or underground facilities?

NDA response

The NDA advised that they are working on a framework under which the process might move from broad areas to a more narrowed site selection process. Consultation documents on this will be available next year, and it will then be up to the Partnership to draw up its own process and bring all of these other factors in.

Partnership response

The Partnership acknowledged that the NDA's input will be valuable, but so will other contributions. They stated that the Partnership is already addressing this issue (see 2.1 above re the Partnership's paper on the siting process (Document 75 to be published shortly)) and will decide on the criteria, and that these will depend on public opinion and the views of the decision making authorities. In relation to the issue of blight, they do not see this process precluding any other possible development.

Response from questioner

The questioner stressed that she had not actually mentioned blight and the question was not based on that. It was asked for the reasons that, if you were to imagine a map with all of the different aspects laid on it, people may want to make a choice between the potential opportunities and disadvantages, and may want to weigh up both for different developments.

7.4 – Question about the need to take a decision about participation at the planned stage in the process

Has the Partnership thought about whether this decision to participate is actually too early in the process or, indeed, needs to be taken at all? We can withdraw at any late stage, and as the process moves forward, the community could change their views. Taking a decision at this stage is very black and white, and this could change.

Partnership responses

There were several responses including:

- The representative from Churches Together in Cumbria (CTiC) stated that the issue of the MRWS process and membership of the Partnership had been discussed at the CTiC social responsibility forum. Some people were not too sure but it was decided that they wanted to take part because they can say no at a later stage, whereas if they say no now they are no longer involved.
- CCC stated that the point raised by the questioner is very valid. It was noted that when the Partnership was formed it broadly took on the expectations associated with the White Paper, which had certain timescales within it. Whilst this really is quite an organic process the Partnership is broadly working towards those timescales that it signed up to, and there are various agreements within each part of the process.
- It was recognised that neither the Partnership nor the decision making authorities can predict the outcome of PSE2 and what the reactions will be. However it is not thought that anybody is “wedded” to having to sign up to certain decisions at certain dates if members of the public have concerns. The situation that the Partnership is working on given the complexity of what it is working with, means that the timescales are flexible.
- The comment from the questioner was noted as being helpful in giving the Partnership pause for thought, and assurance was given that it would be considered carefully.

7.5 – Statement about taking into account the views of young people.

I think there’s a real ethical argument about using a referendum. The people who are making the decision might not be around when the repository is actually built – don’t exclude those who will be here in 40 years, they may not even be living in the county yet. The use of Facebook, Twitter, mobile phones all need to be considered.

8. Acronyms/Abbreviations

ABC/Allerdale BC	Allerdale Borough Council
BGS	British Geological Survey
CALC	Cumbria Association of Local Councils
CBC/Copeland BC	Copeland Borough Council
CCC/Cumbria CC	Cumbria County Council
CoRWM	Committee on Radioactive Waste Management
CSP	Community Siting Partnership
DECC	Department of Energy and Climate Change
DfT	Department for Transport
DMB	Decision Making Body
DtP	Decision to Participate
EA	Environment Agency
EoI	Expression of Interest
FAQ	Frequently Asked Questions
FoE	Friends of the Earth
GDF	Geological Disposal Facility
HSE	Health & Safety Executive
ILW	Intermediate Level Waste
IPC	Infrastructure Planning Commission
LDNPA	Lake District National Park Authority
LGA	Local Government Association
LLW	Low Level Waste
LLWR	Low Level Waste Repository
MoU	Memorandum of Understanding
MRWS	Managing Radioactive Waste Safely
NALC	National Association of Local Councils
ND	Nuclear Directorate (a department of the HSE)
NDA	Nuclear Decommissioning Authority
NEA	Nuclear Energy Agency
NGO	Non-Governmental Organisation
NII	Nuclear Installations Inspectorate (of the HSE)
NNPS	Nuclear National Policy Statement
NWAA	Nuclear Waste Advisory Associates
NWDA	North West Development Agency
NuLeAF	Nuclear Legacy Advisory Forum
NWAT	Nuclear Waste Assessment Team (of the EA)
OCNS	Office for Civil Nuclear Security
OECD	Organisation for Economic Cooperation and Development
PSE	Public and Stakeholder Engagement
RoW	Right of Withdrawal
RWMD	Radioactive Waste Management Directorate (of the NDA)
SEA	Strategic Environmental Assessment
SLC	Site Licence Company
ToRs	Terms of Reference
UKSO	UK Safeguards Office
UNECE	United Nations Economic Commission for Europe
WCSF	West Cumbrian Strategic Forum
WCSP	West Cumbria Strategic Partnership
WCSSG	West Cumbria Sites Stakeholder Group

Appendix 1 – Agenda for the 28th October 2010 meeting

Objectives of the meeting were to:

- Assess the British Geological Survey screening study report (Task 2b).
- Initiate, monitor and guide PSE2 (Task 6a(iv)).
- Agree the way forward regarding a quantitative indicator for credible support and decision making.

Agenda

Time	Item	Agenda Notes
09.00	Arrivals/registration.	
09.30	Welcome & agenda setting.	
09.45	BGS Study (Part one) Background, findings, comments and discussion.	<p>Presentations from:</p> <ul style="list-style-type: none"> - DECC: context and purpose. - BGS: method and results. - Partnership Peer Reviewer comments. - Other reviewer comments (EA, CoRWM). - Public and Stakeholder engagement plans over the coming months. <p>Questions of fact and methodology, pending a fuller discussion after the break.</p>
10.45	Coffee/Tea	An extended break to enable media interviews and informal discussion.
11.30	BGS Study (Part two)	<p>Plenary discussion focusing on the implications of the BGS Study, with particular regard to the criteria in the Work Programme:</p> <p>2a: 'Whether the Partnership is confident in the integrity of the BGS screening work/report'.</p> <p>2b: 'Sufficient areas remaining in West Cumbria after initial screening to make further progress worthwhile'.</p>
	Public Questions	Opportunity for members of the public to ask questions of the Partnership.
12.50	Lunch	(approx. timing)
	Updates (inc.from Sub-Groups) and actions.	An updates sheet will be tabled on the day.

Public and Stakeholder Engagement, Round 2	Short presentation outlining the activity planned to engage the public and stakeholder organisations in PSE2.
Tea/Coffee	
Credible Support and Decision Making	Brief return to the Credible Support Item from the last meeting (Document 74 draft 4). Also see separate technical briefing on surveys from Ipsos MORI for information (Document 109).
Way Forward	Confirm any actions arising and key next steps.
16.00	Close

Bold type indicates papers sent out in advance of the meeting.

Appendix 2 – Attendees on 28th October 2010

Mike Davidson	Allerdale Borough Council	(Steering Group member)
Tim Heslop	Allerdale Borough Council	
Charles Holmes	Allerdale Borough Council	(Steering Group member)
Carni McCarron-Holmes	Allerdale Borough Council	
Ken Williams	Barrow Borough Council	
Guy Richardson	CALC	
Geoff Smith	Allerdale CALC	
Chris Shaw	Allerdale/Copeland CALC	(Steering Group member)
Keith Hitchen	Copeland CALC	(Steering Group member)
Revd Dr Lindsay Gray	Churches Together in Cumbria	
Yvonne Clarkson	Copeland Borough Council	
Ian Curwen	Copeland Borough Council	
Allan Holliday	Copeland Borough Council	
Fergus McMorrow	Copeland Borough Council	(Steering Group member)
Elaine Woodburn	Copeland Borough Council	(Steering Group member)
Tim Knowles	Cumbria County Council	(Steering Group member)
Gerald Humes	Cumbria County Council	
Stewart Kemp	Cumbria County Council	(Steering Group member)
David Southward	Cumbria County Council	
Mike Tonkin	Eden District Council	
Robert Allison	Lake District National Park Authority	
Judith Cooke	Lake District National Park Authority	
Robert Morris-Eyton	National Farmers Union	
Fred Barker	NuLeAF	
Observing Members		
Bruce Cairns	DECC	
Andrew Craze	DECC	
Brian Clark	CoRWM	
John Rennilson	CoRWM	
Gavin Thomson	Environment Agency	
Sarah Thompson	Environment Agency	
Alun Ellis	NDA RWMD	
Andy Parkes	NDA RWMD	
Apologies		
Mark Dutton	CoRWM	
Paul Feehily	Cumbria County Council	
Tony Markley	Cumbria County Council	
Paul McKenna	Isle of Man Government	
Mick Bacon	Nuclear Installations Inspectorate	
Simon Rowley	South Lakeland District Council	
Clare Feeney-Johnson	South Lakeland District Council	
Sam Standage	Allerdale Borough Council	
David Moore	West Cumbria Sites Stakeholder Group	(Steering Group member)

Facilitators, Secretariat and Presenters

Richard Harris	3KQ (Facilitator)
Rhuari Bennett	3KQ (Facilitator and Programme Manager)
Jane Dalton	3KQ (Report Writer)
Sharon Walker	Copeland Borough Council (Secretariat)
Dr John Powell	British Geological Survey
Dr Colin Waters	British Geological Survey
Dr Jeremy Dearlove	FWS Consultants Ltd (Peer reviewers of British Geological Survey study)

Other

Paul Gardner	Osprey Communications (Communications Adviser)
Gareth Powells	Wood Homes (Partnership Evaluators)
Helen Fisher	3KQ (Discussion Pack Design Team)

Members of the Public and Stakeholders who attended for all or part of the meeting

David Wood
Sue Hunter
George Hunter
Ian Watson
Diana Spencer
Chris Taylor
Jean McSorley
Ruth Balogh
Jill Perry
Richard Griffin
Cherry Tweed
Lewis Mortimer
Bill Miller
David Claxton
John Cain
David Davies
Mike Rielly
David Broughton

Media

Kate Fisher, ITV Border
Samantha Parker, ITV Border
Emily Unia, Radio Cumbria

Other Members, Not in Attendance

John Kane	Copeland Borough Council	
Rob Johnston	Cumbria Chamber of Commerce	
Ian Stephens	Cumbria Tourism	
Peter Kane	GMB Union	(Steering Group member)
Peter Clements	Prospect Union	

Appendix 3 – How Members Represent their Organisations on the Partnership

All Partnership members recognise the need to update the organisations that they represent and proactively feed their views in. This is essential to prevent Partnership members becoming 'detached' from their organisation in terms of understanding, as well as maintaining the credibility of the representative role that members commit to fulfilling. The table below sets out how each organisation undertakes to do this.

Note the gaps will be filled as reporting mechanisms are clarified.

Organisation	Nominated Representatives and preferred contact details	Mechanisms Used
Allerdale BC	<p>Mike Davidson (councillor) mike.davidson@allderdale.gov.uk Sam Standage (councillor) sam.standage@allderdale.gov.uk Tim Heslop (councillor) tim.heslop@allderdale.gov.uk Carni McCarron-Holmes (councillor) carni.mccarron-holmes@allderdale.gov.uk Charles Holmes charles.holmes@allderdale.gov.uk</p>	<p>Verbal progress report provided to the following meetings: - Corporate Management Team/ Heads of Service. - Regeneration Portfolio Holders. - Regeneration Managers Group (for further cascade). - Partnerships and Communities Directorate.</p> <p>Formal report for endorsement, or decision, would be via: - Nuclear Issues Task Group. - Executive Committee Council.</p>
Barrow BC	<p>Ken Williams (councillor) kenwilliams@barrowbc.gov.uk Phil Huck philhuck@barrowbc.gov.uk</p>	Verbal update given to Leader after each Partnership meeting.
CALC (Allerdale)	<p>Chris Shaw chris.shaw@calc.org.uk Geoff Smith (councillor) geoffandhelen@tesco.net</p>	Regular written and verbal report to CALC's Allerdale Association meetings.
CALC (Copeland)	<p>Chris Shaw chris.shaw@calc.org.uk Keith Hitchen (councillor) keith.hitchen@btinternet.com</p>	Regular written and verbal report to CALC's Copeland Association meetings.
CALC (Cumbria)	<p>Guy Richardson guy.richardson@calc.org.uk</p>	Regular written and verbal report to CALC's Executive Committee meetings.
Chamber of Commerce (Cumbria)	<p>Robert Johnston rob@cumbriachamber.co.uk</p>	
Churches Together in Cumbria	<p>Revd Dr Lindsay Gray lgray782@btinternet.com</p>	
Copeland BC	<p>Elaine Woodburn (councillor) ewoodburn@copelandbc.gov.uk Allan Holliday (councillor) allan.holliday@copeland.gov.uk John Kane (councillor) john.kane@copeland.gov.uk Yvonne Clarkson (councillor) Fergus McMorrow fergus.mcmorrow@copeland.gov.uk Ian Curwen ian.curwen@copeland.gov.uk</p>	<p>Leader's update to full Council. Update to Nuclear Working Group. Update to Executive at key milestones. Update to MRWS Task Group when needed.</p>

Cumbria County Council	<p>Tim Knowles (councillor) timothy.knowles@cumbriacc.gov.uk Tony Markley (councillor) anthony.markley@cumbriacc.gov.uk David Southward (councillor) david.southward@virgin.net Gerald Humes (councillor) gerald.humes@cumbriacc.gov.uk Paul Feehily paul.feehily@cumbriacc.gov.uk Stewart Kemp stewart.kemp@cumbriacc.gov.uk</p>	<p>6-weekly written report to Nuclear Issues Working Group (NIWG). Quarterly report to Cabinet. Monthly report to Nuclear Issues Programme Board. Possible insert in weekly briefing to all staff. Link to Partnership website. Attending Allerdale and Copeland Local Area Committees on request.</p>
Cumbria Tourism	<p>Ian Stephens istephens@cumbriatourism.org</p>	
Eden District Council	<p>Mike Tonkin (councillor) mike.tonkin@eden.gov.uk</p>	<p>Report to members on 'Outside Bodies' website. Presentation to members as Environment Portfolio Holder.</p>
GMB Union	<p>Peter Kane peter.kane@sellafieldsites.com</p>	<p>Updates given to Shop Stewards Committee. Forward newsletters to members.</p>
Lake District National Park Authority	<p>Robert Allison robert.allison@lakedistrict.gov.uk Judith Cooke judith.cooke@lakedistrict.gov.uk</p>	
National Farmers Union	<p>Robert Morris-Eyton rmorriseyt@aol.com</p>	<p>Link to Partnership website and Robert's contact details placed on NFU website. 2 principal officers who cover West Cumbria updated that the process is happening and to forward any queries to Robert.</p>
NuLeAF	<p>Fred Barker fbarker@gn.apc.org</p>	<p>Written report to each NuLeAF Steering Group. Referenced in e-bulletin. Website has a GDF section which signposts Partnership meeting reports.</p>
Prospect Union	<p>Marcus Swift mjs17@sellafieldsites.com</p>	
South Lakeland District Council	<p>Simon Rowley s.rowley@southlakeland.gov.uk Clare Feeney-Johnson c.feeneyjohnson@southlakeland.gov.uk</p>	<p>Forward minutes and newsletters to Senior Management Team and Portfolio Holder.</p>
WCSSG	<p>David Moore dmoore@copelandbc.gov.uk</p>	<p>Quarterly verbal updates to SSG. Paragraph in quarterly newsletter. Link on website to Partnership site.</p>
Observing Members:		
CoRWM	<p>Brian Clark briandclark@btinternet.com Mark Dutton lizmark@lizmark1.co.uk</p>	<p>Verbal update to all plenary meetings. Circulate key papers to Committee. Insert in e-bulletin as appropriate.</p>
DECC	<p>Bruce Cairns bruce.cairns@decc.gsi.gov.uk Andrew Craze andrew.craze@decc.gsi.gov.uk</p>	<p>Report to various meetings and colleagues with an interest in the process. Advise Ministers who take Government decisions in this area.</p>

Environment Agency	Gavin Thomson gavin.thomson@environment-agency.gov.uk	Report key points arising to various colleagues in nuclear regulation and NW region.
Isle of Man Government	Paul McKenna paul.mckenna@gov.im	Presentation on geological disposal planned for Council of Ministers in mid-June 2009.
NDA	Alun Ellis alun.ellis@nda.gov.uk Jay Redgrove jay.redgrove@nda.gov.uk	Monthly reporting to RWMD and central communications staff. Dissemination of Partnership minutes and Meeting Reports to staff.
Nuclear Installations Inspectorate	Mick Bacon mick.bacon@hse.gsi.gov.uk	Contact reports distributed after each contact (meeting or otherwise). Regular report to related project groups. Briefings taken before each meeting depending on agenda.